



### RESIDENTIAL HANDRAIL REQUIREMENTS

1. Handrails shall be 34 to 38 inches above the nosing of treads.
2. Handrails shall terminate in newel posts or safety terminals or have rounded termination or bends.
3. Handrails shall be continuous the full length of the stairs.
4. Handrails shall be provided to all stairways having 4 or more risers.
5. Residential stairways may have a handrail on only one side.
6. Handrails projecting from a wall shall have a space of not less than 1 1/2" inch nor more than 2 inches from the wall.
7. Handgrip portion of the handrails shall not be less than 1 1/4" or more than 2 5/8" in cross-sectional dimension and shall have a smooth surface with no sharp corners.

### RESIDENTIAL STAIR REQUIREMENTS

1. 6 foot 8 inch minimum headroom is required
2. 8 inch maximum rise
3. 4 inch minimum rise
4. 9 inch minimum run (nosing to nosing)
5. The greatest riser height within a flight of stairs shall not exceed the smallest by more than 3/8 inch.
6. The greatest tread size within a flight of stairs shall not exceed the smallest by more than 3/8 inch

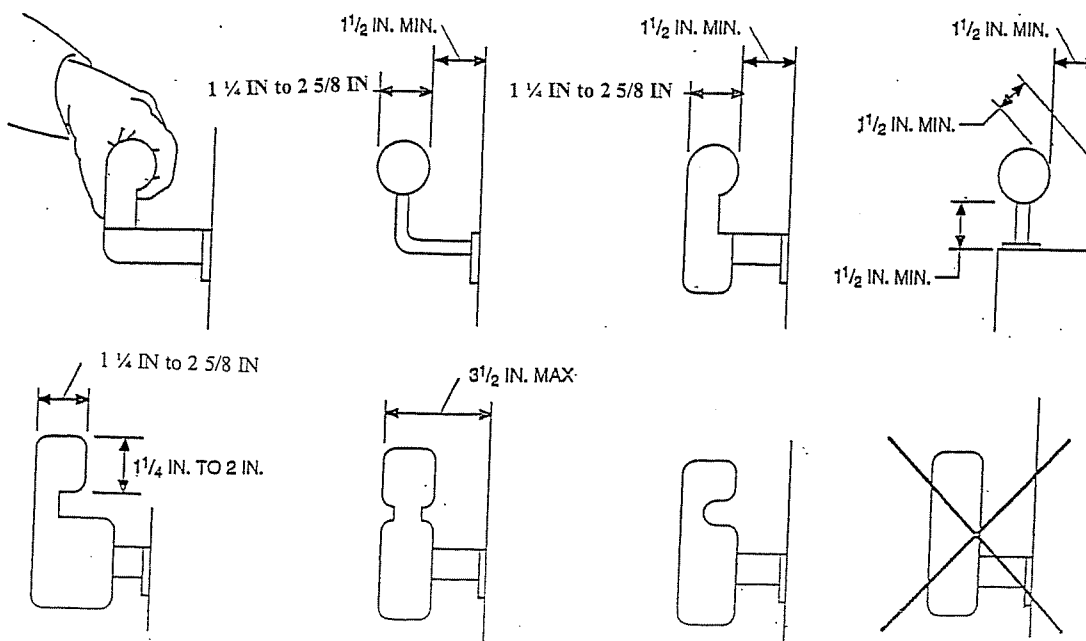
### RESIDENTIAL GUARDRAIL REQUIREMENTS

1. 36 minimum height
2. Less than 4 inch maximum spacing

### RESIDENTIAL LANDING REQUIREMENTS

1. No landing shall be more less than 36" in length.
2. A door may open at the top step on an interior flight of stairs; provided the door does not swing over the stair.
3. A door may open at a landing that is not more than 7 1/2 inches lower than the floor level provided the door does not swing over the landing, Screen doors and storms door may swing over stairs, steps or landing.

### ACCEPTABLE HANDRAIL DETAILS



NOTE: Other shapes may be acceptable if they provide an equivalent gripping surface.